

MAYOR OF LONDON & LONDON ASSEMBLY ELECTIONS

THE CANDIDATES

WHAT THE ELECTIONS ARE ABOUT • HOW TO VOTE

HAVE YOUR SAY – VOTE 3RD MAY



londonelects.org.uk

CONTENTS

Introduction	03
The Mayor of London	04
Mayor of London candidates	05
Lawrence Webb, Fresh Choice for London	06
Carlos Cortiglia, British National Party	08
Siobhan Benita	10
Brian Paddick, London Liberal Democrats	12
Boris Johnson, The Conservative Party Candidate	14
Jenny Jones, Green Party	16
Ken Livingstone, The Labour Party Candidate	18
The London Assembly	20
Constituencies	21
Constituency London Assembly Member candidates	22
London-wide Assembly Member candidates	27
Where you can vote	29
What to expect at the polling station	30
Election day guide	31

INTRODUCTION

On Thursday 3rd May you can vote for the Mayor of London and the 25 members of the London Assembly.

The Mayor of London and the London Assembly make decisions on aspects of your everyday life in London including transport, policing, housing, the environment, and fire & emergency planning.

I am required by law to send this booklet to every registered elector in London. Inside you will find information about the elections, including mini-manifestos from candidates standing for Mayor of London, and names of all the candidates standing for the London Assembly.

You will also find information about how to fill in your ballot papers and how the results are calculated.

The Mayor of London candidates

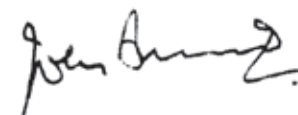
There are seven candidates standing for Mayor of London. They will be listed on the pink ballot paper alphabetically. Please see overleaf for the candidate names.

All of the candidates were invited to put their mini-manifesto in this booklet in return for the £10,000 contribution towards the costs which the law requires. All of the candidates chose to do so. I drew lots to decide the order they appear in this booklet.

The London Assembly candidates

There are 14 Constituency London Assembly Members and 11 London-wide Assembly Members. You can find out more about what the London Assembly do and who is standing for election from page 20 of this booklet.

For more information about the London elections, including how to vote and where your polling station is, visit www.londonelects.org.uk.



John Bennett

Greater London Returning Officer

THE MAYOR OF LONDON

What does the Mayor of London do?

On Thursday 3rd May you can vote for the person you want to be Mayor of London for the next four years.

The Mayor of London makes decisions which affect everyday lives of Londoners. The Mayor has particular responsibilities for: policing, transport, housing, fire & emergency planning, arts & culture, economic development & regeneration, planning & development, noise & air quality, tackling health inequalities, climate change & energy, and waste & biodiversity.

How do I vote?

Vote for the Mayor using your PINK ballot paper.

- You can make two choices for Mayor.
- Vote for your first choice candidate by marking a cross (X) in the first choice column.
- Vote for your second choice candidate by marking a cross (X) in the second choice column.
- You can choose not to mark a second choice.
- If you **only** mark a second choice, your vote will not be counted.
- If you give the same candidate your first and second choice, only your first choice will be counted.
- Marking a second choice cannot reduce the chances of your first choice being successful.
- Only one of your choices is counted towards the final result so you still only get one vote.



How is the Mayor elected?

If a candidate gets more than half of all the first choice votes, they will be declared the winner and elected Mayor of London.

If no candidate gets more than half of the first choice votes, the two candidates with the most first choices go into a second round and all other candidates are eliminated. The eliminated candidates' ballot papers are reviewed and any second choice votes for the top two candidates are added to their scores.

The candidate with the highest number of combined first and second choice votes is the winner.

Find out more about the Mayor of London at www.londonelects.org.uk

MAYOR OF LONDON CANDIDATES

Below is a sample of the ballot paper which you will be given either at a polling station or by post if you have requested it. This shows the order the candidates will appear in. You can make two choices for the Mayor of London.

Election of the Mayor

Vote once (X) in column one for your first choice
Vote once (X) in column two for your second choice

	column one first choice	column two second choice
1 BENITA Siobhan Benita	<input type="checkbox"/>	<input type="checkbox"/>
BNP		
2 CORTIGLIA Carlos Cortiglia British National Party	<input type="checkbox"/>	<input type="checkbox"/>
CONSERVATIVES		
3 JOHNSON Boris Johnson The Conservative Party Candidate	<input type="checkbox"/>	<input type="checkbox"/>
GREEN PARTY		
4 JONES Jenny Jones Green Party	<input type="checkbox"/>	<input type="checkbox"/>
LABOUR		
5 LIVINGSTONE Ken Livingstone The Labour Party Candidate	<input type="checkbox"/>	<input type="checkbox"/>
LIBERAL DEMOCRATS		
6 PADDICK Brian Paddick London Liberal Democrats	<input type="checkbox"/>	<input type="checkbox"/>
UKIP		
7 WEBB Lawrence James Webb Fresh Choice for London	<input type="checkbox"/>	<input type="checkbox"/>

Sample ballot paper only

Lawrence Webb

A Fresh Choice for London



Only UKIP offers a truly Fresh Choice for London.

Millions of Londoners fear for their livelihoods because of punishing EU regulations which threaten up to half a million jobs that rely on a thriving financial services industry.

This is not just banking, it is the support services, like secretaries, IT workers, cleaners, bar and restaurant staff - even cabbies.

Only UKIP will fight to protect those jobs by saying NO to EU regulation of the City.

Vote UKIP on May 3rd.

Lawrence Webb

Fresh Ideas for London

- ✓ **Create more jobs** for Londoners by saying 'No' to open-door immigration.
- ✓ **Cut rates for local businesses** employing local people.
- ✓ **Fight EU red tape** strangling London businesses.
- ✓ **Priority for Londoners** whatever their ethnic origin for jobs and housing, over migrants and asylum seekers.
- ✓ **Zero tolerance** on gangs, knife crime and anti-social behaviour. Offend on Saturday, face court on Monday.
- ✓ **20 minutes free parking** across London.
- ✓ **Allow taxis** to use Olympic VIP lanes.
- ✓ **Cut Council house waiting lists** in half by filling empty properties from a central register and prioritising the needs of long-term Londoners.
- ✓ **Stop spending public money** on public sculpture when pensioners can't pay their bills.
- ✓ **Give landlords the power** to decide if they want smoking rooms in pubs and clubs.
- ✓ **5% VAT** on beer and cider.

UK Independence Party



0800 587 6 587

ukipmayor.com

Published & promoted by Peter Staveley on behalf of UKIP 156 Pentonville Rd, London N1 9JL



visit www.BNP.org.uk



Dear Londoner,

I've lived in London since 1989 and I have worked for the BBC and then at the Commonwealth Office. I am of Italian descent which, I guess, makes me the most 'cosmopolitan' candidate standing for London Mayor in 2012.

I was outraged to find some immigrant communities refusing to respect the British people and their way of life so I joined the British National Party because I want to preserve the traditions, freedoms and identity of the country that has been so good to me and my family.

London is a diverse city and although there are some benefits, Multiculturalism has clearly led to division and confrontation instead of integration. The shocking looting and rioting last August is a prime example of this failed policy.

London needs a strong Mayor who is fair and decisive with the vision to make this great city of ours dynamic, safe and prosperous. I am that man!

Vote for me on 3rd May and together we will make London a city to be proud of again.

Carlos Cortiglia
British National Party
Mayoral Candidate

Want to see Carlos take on the other mayoral candidates live on TV?

Call BBC London on 020 8743 8000 and demand that they invite the British National Party to all televised debates



CORTIGLIA Carlos
British National Party

First choice



Call 0844 809 4581



**BRITISH
NATIONAL
PARTY**

People like you voting BNP:

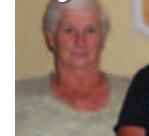
- ✓ British people must be housed first
- ✓ No amnesty for illegal immigrants
- ✓ Build a better NHS
- ✓ Zero tolerance on crime and anti-social behaviour
- ✓ British jobs for British workers
- ✓ Abolish the Congestion Charge, CPZ and LEZ
- ✓ Reduce council tax
- ✓ Free weekend Tube and train travel



“ I support the British National Party all the way because I want to make a difference and have a no-nonsense British government that puts British people first. ”
Mike Jones, London Cabbie



“ I'm backing the British National Party because they support our traditional Christian faith. We need strong leadership to protect our national identity from the threat of Islam. ” **Reverend Robert West**



“ We always vote for the British National Party because we want streets that are safe to walk on. We want to see local bobbies on the beat and we want to feel part of a caring British community again. ”
Penny McCulley, Pensioner



British National Party – London



Siobhan for MAYOR

Elect Siobhan Benita for Mayor 2012

Making London even Better!

Three reasons to vote for Siobhan Benita:

1

She is **independent** - she will focus on people and not waste time on party politics

2

She will make **education** a key priority - London's children deserve the best start in life

3

She will be an **inclusive** mayor, creating jobs and opportunities for people and businesses

About Siobhan Benita

- Born in Wimbledon in 1971
- Grew up in Merton
- Attended local state schools
- Studied at Warwick University
- Senior career in Government for 15 years
- Married with two daughters

People not party politics

Siobhan is the modern candidate for London's Mayor. She is in touch with Londoners and understands their day-to-day concerns.

Siobhan has real experience at the highest levels in policy and decision making. She has worked in many government departments including the Treasury and the Cabinet Office. She resigned from her job in January 2012 to run as a mayoral candidate because she believes that Londoners deserve a better, more relevant choice in this election.

When Siobhan is Mayor she will

Make education a priority ✓

- Work for every child to have an excellent primary school place
- Make the transition to secondary school fair and sensible
- Appoint an Education Commissioner to raise standards
- Appoint a Young Mayor for London and create a new youth assembly

Create jobs and boost economic growth ✓

- Support long-term investment to keep London's economy strong
- Work with employers to create new jobs and opportunities
- Provide free travel for jobseekers and reduced fares for low earners

Improve transport in London ✓

- Freeze fares until at least April 2014
- Keep tubes running one hour later on Friday and Saturday night
- Make the transport network more accessible and user-friendly

Build better, safer neighbourhoods ✓

- Put more police on the streets and focus on crime prevention
- Address residents' top five local issues in each borough
- Provide safe havens for people under threat of violence or abuse

Housing and better use of space ✓

- Target unused and derelict buildings for new housing
- Offer space in underused public buildings to charities and other organisations

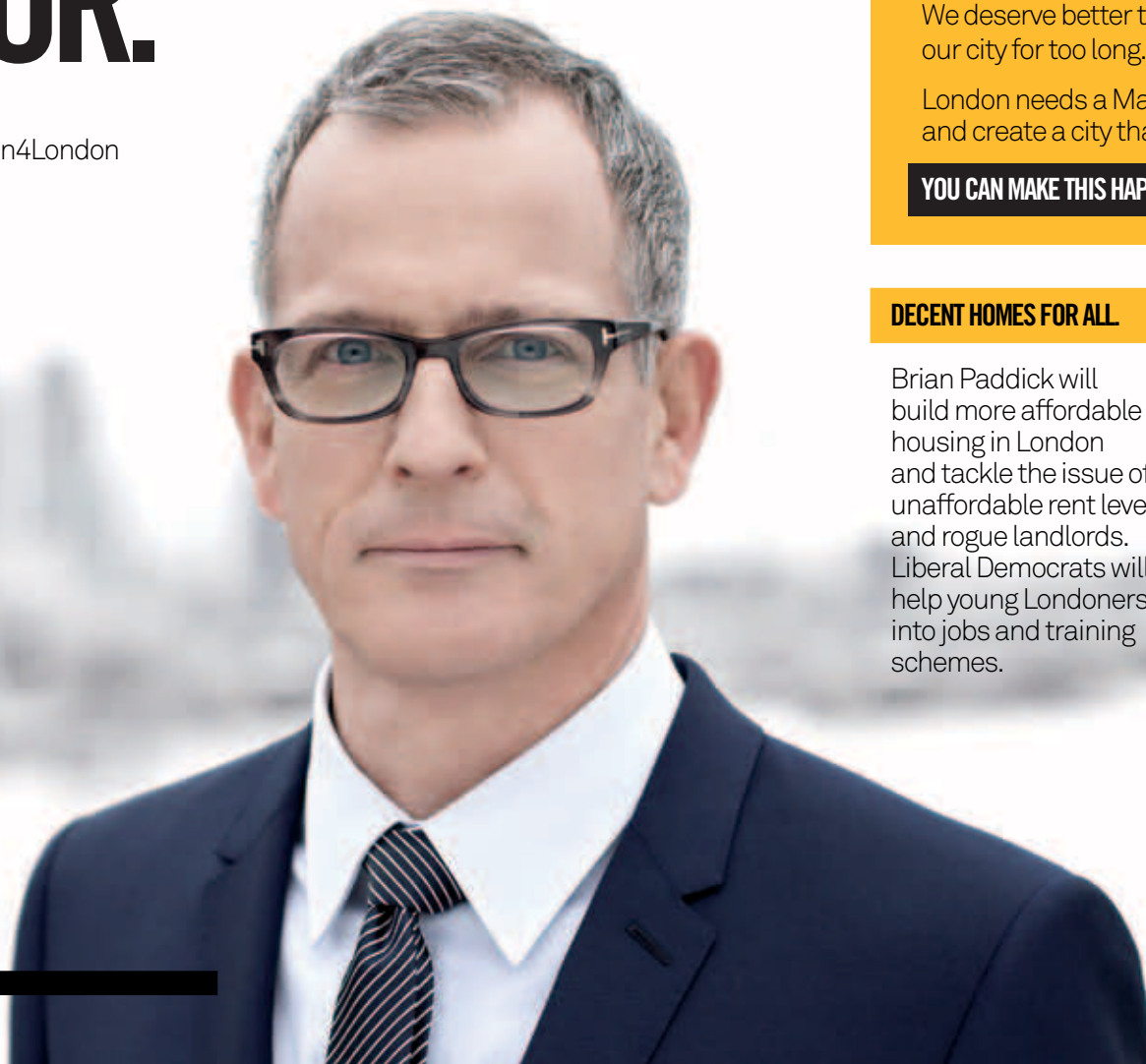
Visit my website www.siobhanformayor.com

Follow me on Twitter at [@Siobhan4Mayor](https://twitter.com/Siobhan4Mayor)

Produced by: Vincent Benita, 66 Westbury Road, New Malden, KT3 5AS
email: info@siobhanformayor.com

BRIAN PADDICK. THE LONDONERS' MAYOR.

BrianPaddick.com
Facebook.com/Brian4London
@brianpaddick



For the first time in May Londoners will be electing a Mayor who will also be directly responsible for the Metropolitan Police.

I have over 30 years experience of policing in London, including as Borough Commander in Lambeth and in Merton. After the worst riots in a generation last summer, and the damning revelations about the cosy relationship between the Met and News International, we desperately need to restore the public's trust in the police.

If elected Mayor and London's "Police and Crime Commissioner", I would make it my top priority to bring the police and the public together, so that the criminals don't stand a chance.

We deserve better than the "Punch and Judy" politics that has let down our city for too long.

London needs a Mayor who will listen to the concerns of Londoners, and create a city that is safe and affordable for everyone.

YOU CAN MAKE THIS HAPPEN BY VOTING LIBERAL DEMOCRAT IN MAY.

DECENT HOMES FOR ALL

Brian Paddick will build more affordable housing in London and tackle the issue of unaffordable rent levels and rogue landlords. Liberal Democrats will help young Londoners into jobs and training schemes.

FARES THAT WORK FOR YOU.

A one hour bus ticket would put money back into the pockets of hard working Londoners by not charging bus passengers more than once if they have to change buses on a journey.

Brian Paddick has launched plans to make fares fairer by introducing discounts for "early bird" travellers, and bringing back Outer London day Travelcards.

YOU BREAK IT. YOU FIX IT.

Londoners need to know that our justice system is working.

London Liberal Democrats want to set up a London wide community payback scheme that gives local people a say over what work criminals should be doing in their communities.

Brian will restore the Police Sergeants cut from local Safer Neighbourhood Teams.

Published and promoted by Ashley Lumsden on behalf of Brian Paddick and the Liberal Democrats all at Unit 6, Hermes House, 59 Josephine Avenue, London, SW2 2JZ.

Boris Johnson

Investing in London's Future

London is a wonderful city and despite some tough times, there are signs of progress resulting from a fresh and honest approach at City Hall. This has delivered the world's most successful bike hire scheme and a council tax freeze every year saving the average household £445.

I have kept my promises, bringing in a 24-hour freedom pass for older Londoners, putting Oyster on the overground, planting 10,000 street trees. We have put 1000 more police on the street, and found the funding to keep police numbers high -

"And that is my promise to Londoners. To implement a strong plan for the future with the energy and optimism that will truly drive Greater London forward over the next four years."

Promoted by I Sanderson on behalf of The Conservative Party both of 30 Millbank, London SW1P 4DP.

cutting crime by more than 10 per cent. The murder rate is down by a quarter, crime on buses by over a third. We have increased investment in our creaking transport infrastructure, and cut tube delays by 40 per cent.

My determination to end waste and mismanagement at City Hall has freed up the money to pay for a strong plan for our future. We can't put this at risk.

I want to continue to cut crime, invest in local high streets, get the best from the Olympics and stimulate the growth needed to get young people into work.



My 9 point plan for a Greater London

1. Cutting waste at City Hall - freeing up £3.5 billion for services.
2. Putting £445 back in your pocket by freezing the Mayoral share of council tax.
3. Creating 200,000 new jobs over the next four years.
4. Making our streets and homes safer with 1,000 more police on the beat.
5. Restoring 300 acres of green space and planting 20,000 street trees.
6. Investing £221 million to transform local high streets, supporting small businesses.
7. Ensuring a true Olympic legacy - 11,000 new homes and 10,000 new jobs.
8. Reducing Tube delays 30% by 2015. Building Crossrail and orbital rail to link our suburbs. Extending the Bike Hire scheme.
9. Securing a better deal for London from No 10.



Vote Conservative to secure a Greater London on 3rd May

To find out more and join the campaign visit:

BackBoris2012.com

Pledge your support at:

BackBoris2012.com/Borispledge

 **Conservatives**



Jenny Jones

London needs a strong Green voice. We must cut our carbon emissions and be more responsible global citizens. We must protect green spaces, create jobs and look for creative solutions to the massive shortage of affordable housing.

A Green London will be a model for the world in addressing climate change, a city more equal, healthy and affordable for everyone.

Your Green Party Candidate for Mayor of London

My 5 point plan for a more equal, healthy and affordable London

- 1 CUT FARES AND REDUCE TRAFFIC**
I will ensure public transport is always cheaper than driving. I will make suburban rail services more regular and reduce traffic congestion to clean up London's polluted air.
- 2 IMPROVE GREEN SPACES AND THE ENVIRONMENT**
I will complete a network of green spaces to give everyone access to nature. I will plant more street trees, restore flood plains and generate clean energy from food waste.
- 3 MAKE HOUSING AFFORDABLE**
I will build genuinely affordable housing and refurbish a million homes to cut energy bills. I will push to give private tenants more security and stabilise rent levels.
- 4 REDUCE THE GAP BETWEEN RICH AND POOR**
I will offer a job or apprenticeship to all young, unemployed Londoners and award a Fair Pay Mark to companies who reduce pay inequality amongst their employees.
- 5 REBUILD TRUST IN POLICING**
I will put more officers on the beat focused on important areas such as road safety, not unnecessary surveillance. I will rebuild trust in the police, especially amongst the young.

Jenny Jones has served on the London Assembly since it began in 2000. She has served as Deputy Mayor and has spoken up for Londoners on policing, housing and transport.

Support my campaign
london.greenparty.org.uk



[londongreenparty](https://www.facebook.com/londongreenparty)
[@longreenparty](https://twitter.com/longreenparty)



Green Party



Dear Londoner

Over the next four years we are going to need a Mayor who is in touch, a Mayor who understands the pressures that Londoners face every day.

In times like this, the Mayor needs to get more for less. That's why I will crack down on waste and high salaries at City Hall and freeze the Mayor's share of council tax.

We have to use what money is available to ease the squeeze and to get London moving again – creating jobs and growth. And the pledges I make below are not only affordable but are aimed at helping Londoners in tough times.

- **Cut the fares** by 7 per cent this year – saving the average London fare payer £1,000 over four years
- **Crack down on crime** by reversing police cuts
- **Help reduce rents**, improve standards with a London non-profit lettings agency
- **Tackle heating bills** – through insulation and an energy co-op to help households save over £150 a year
- **Introduce a London EMA** of up to £30 a week to help young people stay in education
- **Support childcare** with grants and interest-free loans – and campaign against government cuts to child tax credits

My kids are growing up now, and I don't want them living in a city where no one is taking action to put Londoners first.

Ken Livingstone

Ken

Ken Livingstone cutting fares



Fares have soared above inflation over the last four years. A single bus fare is now up fifty per cent. Outer London Travelcard prices have rocketed.

Labour's Ken Livingstone will cut the fares by seven per cent. He'll cut single bus fares by even more – by 11 per cent. This will save the average Londoner £1,000 over four years.

He will resign if he doesn't do it on or by 7 October.

Ken will freeze fares for 2013, and ensure that they do not rise above inflation after that.

Labour's Ken Livingstone will cut the fares, protect services and invest for the future.

Money from the fares is piling up in TfL's coffers. In these tough times it would be better spent on a fare cut.

Read the facts on how Ken's Fare Deal will save you money at www.kenlivingstone.com/facts



Vote  Labour

3791_12 Promoted by Patrick Heneghan on behalf of the London Labour Party both at 39 Victoria Street, London, SW1H 0HA.

THE LONDON ASSEMBLY

What is the London Assembly?

The London Assembly has an essential role in London's government. It holds the Mayor to account on their strategies, decisions and actions, and investigates issues that are important to Londoners.

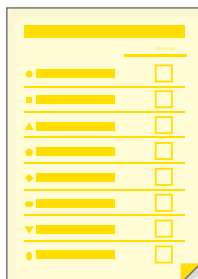
The London Assembly is made up of 25 Members. 14 Assembly Members are elected to represent London's constituencies, and 11 Members represent London as a whole.

How do I vote for the London Assembly?

In the election for the London Assembly, you have two ballot papers.

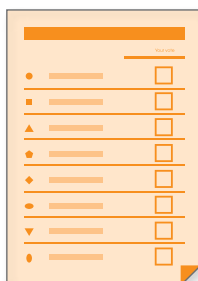
Vote for your Constituency London Assembly Member using the YELLOW ballot paper.

- This is the person who you want to represent your local area.
- Mark one cross (X) in the box next to the candidate you wish to vote for.



Vote for a London-wide Assembly Member using the ORANGE ballot paper.

- This is the party or independent candidate you want to represent the whole of London.
- Mark one cross (X) in the box next to the party or candidate you wish to vote for.



How is the London Assembly elected?

Constituency London Assembly Member: The candidate in each constituency who gets the most votes wins.

London-wide Assembly Member: Votes from across London are added together, and any party or candidate with 5% or less of the votes is eliminated. The 11 seats are then allocated to the remaining parties or independent candidates using a calculation which takes into account any Constituency London Assembly Member seats already won.

Find out more about the London Assembly at www.londonelects.org.uk

CONSTITUENCIES

For this election, London is split up into 14 constituencies - each made up of two to four boroughs. See the map below to see how this is done, and which constituency you live in.



- Barnet and Camden
- Bexley and Bromley
- Brent and Harrow
- City and East (includes Barking & Dagenham, Newham, Tower Hamlets, and the City of London)
- Croydon and Sutton
- Ealing and Hillingdon
- Enfield and Haringey
- Greenwich and Lewisham
- Haringey and Redbridge
- Lambeth and Southwark
- Merton and Wandsworth
- North East (includes Hackney, Islington, and Waltham Forest)
- South West (includes Hounslow, Kingston upon Thames, and Richmond upon Thames)
- West Central (includes Hammersmith & Fulham, Kensington & Chelsea, and Westminster)

CONSTITUENCY LONDON ASSEMBLY MEMBER CANDIDATES

Barnet and Camden

COLEMAN Brian John	Conservative Party Candidate
CORBY Michael Ernest	Fresh Choice For London
DISMORE Andrew Hartley	Labour Party Candidate
POPPY Audrey Mindlin	Green Party
RICHARDS Christopher Lawrence	London Liberal Democrats

Bexley and Bromley

CHANNER Josie	Labour Party Candidate
CLEVERLY James Spencer	The Conservative Party Candidate
COBURN David Adam	Fresh Choice for London
ROOKS Jonathan Scot	Green Party
TREANOR Donna	British National Party
WEBBER Sam Dunning	London Liberal Democrats

Brent and Harrow

ALI Shahrar	Green Party
HENRY Charlotte Alexandra	London Liberal Democrats
McGOUGH Michael Jack	Fresh Choice for London
RAJPUT Sachin	The Conservative Party Candidate
SHAH Navin	Labour Party Candidate

CONSTITUENCY LONDON ASSEMBLY MEMBER CANDIDATES

City and East

(includes Barking & Dagenham, Newham, Tower Hamlets and the City of London)

BIGGS John Robert	Labour Party Candidate
BORG Paul	British National Party
DAVIES Paul	Communist League
MACMILLAN Richard Alan	London Liberal Democrats
MALIK Kamran	Communities United Party
MOSS John Julian Charles	The Conservative Party Candidate
SMITH Chris	Green Party
WOOLFE Steven Marcus	Fresh Choice For London

Croydon and Sutton

LOCK Abigail	London Liberal Democrats
McKENZIE Winston Truman	Fresh Choice for London
O'CONNELL Stephen John	The Conservative Party Candidate
ROSS Gordon Halliday	Green Party
WOODLEY Louisa	Labour Party Candidate

Ealing and Hillingdon

BARNES Richard Michael	The Conservative Party Candidate
COX Michael Francis	London Liberal Democrats
EDWARD Ian	National Front Putting Londoners First
FURNESS David	British National Party
HARLING Mike	The Green Party
KNIGHT Helen Louise	Fresh Choice for London
SAHOTA Onkar Singh	Labour Party Candidate

CONSTITUENCY LONDON ASSEMBLY MEMBER CANDIDATES

Enfield and Haringey

BARNES Dawn	London Liberal Democrats
HEMSTED Andy	The Conservative Party Candidate
KRAKOWIAK Peter John	Green Party
McCARTNEY Joanne	Labour Party Candidate
NICHOLAS Marie	British National Party
STAVELEY Peter	Fresh Choice For London

Greenwich and Lewisham

CULNANE Tess	National Front Putting Londoners First
DUVALL Len	Labour Party Candidate
OAKLEY Paul James	Fresh Choice for London
RAYMOND Barbara	Greenwich and Lewisham People Before Profit
RUSSELL John	London Liberal Democrats
SEDGLEY Roger	Green Party
WILSON Alex	The Conservative Party Candidate
WOODS Roberta	British National Party

Havering and Redbridge

BROWN Malvin Paul	Residents' Association of London Official Candidate
EDMONDS Richard	National Front Putting Britain First
EVANS Roger	The Conservative Party Candidate
ISLAM Farrukh Jamal	London Liberal Democrats
RICHARDS Mandy Marie	Labour Party Candidate
SAAD Haroon	Green Party
TAYLOR Robert	British National Party
TWIDDY Mark Alan	English Democrats – "Putting England First!"
WEBB Lawrence James	Fresh Choice for London

CONSTITUENCY LONDON ASSEMBLY MEMBER CANDIDATES

Lambeth and Southwark

BARTLEY Jonathan Charles	Green Party
BLACKIE Rob	London Liberal Democrats
FLUSS James Gordon	Fresh Choice For London
LAMBERT Daniel Peter	The Socialist Party (GB)
MITCHELL Michael	The Conservative Party Candidate
SHAWCROSS Val	Labour Party Candidate

Merton and Wandsworth

COOPER Leonie	Labour Party Candidate
KULENDRAN Thamilini	Independent
MANZOOR Mazhar	Fresh Choice for London
MARTIN James William	The Socialist Party (GB)
SMART Lisa	London Liberal Democrats
TRACEY Richard Patrick	The Conservative Party Candidate
VICKERY Roy	Green Party

North East

(includes Hackney, Islington, and Waltham Forest)

ALLEN Caroline	Green Party Candidate
ARNOLD Jennette	Labour Party Candidate
HAYAT Ijaz	Independent
NEWSTEAD Naomi Abigail	The Conservative Party Candidate
QURESHI Farooq	London Liberal Democrats
WIFFEN Paul Kevin	Fresh Choice For London

CONSTITUENCY LONDON ASSEMBLY MEMBER CANDIDATES

South West

(includes Hounslow, Kingston upon Thames, and Richmond upon Thames)

ARBOUR Tony	The Conservative Party Candidate
BOLTER Jeffrey Warner	Fresh Choice for London
GOLDSMITH Daniel Charles	Green Party
HOMAN Lisa	Labour Party Candidate
WILSON Munira	London Liberal Democrats

West Central

(includes Hammersmith & Fulham, Kensington & Chelsea, and Westminster)

FOREMAN Todd	Labour Party Candidate
JONES Elizabeth Eirwen	Fresh Choice for London
MALTHOUSE Kit	The Conservative Party Candidate
MORAN Layla Michelle	London Liberal Democrats
RUSTIN Susanna Jane	Green Party

LONDON-WIDE ASSEMBLY MEMBER CANDIDATES

BRITISH NATIONAL PARTY

SQUIRE Stephen, FURNESS Dave, STURDY Paul, CORTIGLIA Carlos, CLARK John, TAYLOR Robert, DE SANTIS Guiseppe, TREANOR Donna, WOODS Roberta, NICHOLAS Marie, BROOKS Rowland John

CHRISTIAN PEOPLES ALLIANCE - SUPPORTING TRADITIONAL MARRIAGE

MARTIN Malcolm Kershaw, MAY Sue, CORDLE Sid, AMAR Flora, CAPSTICK William Patrick, ODIETE Ethel, CONNOLLY Matthew Brendan, STAFFORD Denise, BOYLE Mary, TRIVEDI Vivek, GRECO Ellen Sheila, OLAWALE Francis Adebola, HAMPSON Robert Edward, ISINGOMA Rita Cossie, GAIN Stan, PRICE Ruth, HAMMOND Stephen Charles, MREWA Charles, STAFFORD Benny, SCRIMSHAW Doreen Anna, RUDD Jonathan Michael, MAY Tony, MILLS Katherine Susan, GLENCROSS Roger Edmund, MUIQ Faith

CONSERVATIVE PARTY

BOFF Andrew, BACON Gareth Andrew, BORWICK Victoria Lorne Peta, FERNANDES Sue-Ellen Cassiana, ADEGOKE Kemi, MAXWELL SCOTT Matthew Joseph, SHARIF Nadia Jabine, HUGHES Anthony Havard Maengwyn, STRANACK Andrew Jeremy, SACOOR Karim Momade Aly, BHOGAL Amandeep Singh, HAMPSHEIR Christopher David

ENGLISH DEMOCRATS - "PUTTING ENGLAND FIRST!"

COOPER Roger, UNCLES Steven Thomas, WEALD Benjamin, BROOKES Leo Anthony, POLENCEUS Janus, TWIDDY Mark Alan, BARNBROOK Michael John, CAKEBREAD Brian Michael

GREEN PARTY

JONES Jenny, JOHNSON Darren, LYNCH Noel, BENNETT Natalie, ALI Shahrar, BAKHT Farid, ALLEN Caroline, PHOENIX Romyne, RUSSELL Caroline, HUGHES Anna, POWLEY Marek

LABOUR PARTY

GAVRON Nicky, QURESHI Murad, TWYCROSS Fiona, COPLEY Tom, NOSEGBE Florence, DESAI Unmesh, HEARN Kirsten, ALI Liaquat, MCKEOWN Mabel, MCGRATH Kevin, QUIGLEY Christine

LONDON-WIDE ASSEMBLY MEMBER CANDIDATES

LONDON LIBERAL DEMOCRATS

PIDGEON Caroline, KNIGHT Stephen, FOX Bridget, SHEEHAN Shas, EMERSON Merlene, DAVEY Emily, BRADLEY Steve, RAY Marisha, RUSSELL Nick, MASROOR Ajmal, RICHARDS Chris

NATIONAL FRONT PUTTING LONDONERS FIRST

CULNANE Tess, EDWARD Ian, CRIPPS Andrew

THE HOUSE PARTY - HOMES FOR LONDONERS

MCGRENERA Terence

TRADE UNIONIST AND SOCIALIST COALITION

GORDON Alex, WRACK Nick, ASHLEY April, GRIFFITHS Sian, HEDLEY Steve, LEAHAIR Ian Brian, MCFARLANE Gary Alexander Joseph, POWELL-DAVIES Martin, READER Merlin, SIMPSON Joe, SUTTON Jenny, TAAFFE Nancy, TURNER Jackie, VERNON Lee James, WOODBURN Lesley, DOOLEY Michael, BENJAMIN Mark Jason

UK INDEPENDENCE PARTY

WOOLFE Steven Marcus, COBURN David, WEBB Lawrence James, KNIGHT Helen Louise, JONES Elizabeth Eirwen, OAKLEY Paul James, BOLTER Jeffrey Warner, MCGOUGH Michael Jack, MCKENZIE Winston Truman, STAVELEY Peter, MANZOOR Mazhar

INDIVIDUAL CANDIDATE

ALAGARATNAM Rathy

INDIVIDUAL CANDIDATE

HAYAT Ijaz - Independent

WHERE YOU CAN VOTE

At your polling station

Before 3rd May you will be sent a 'poll card' which includes details of where your polling station is. You do not need to take the poll card with you to be able to vote, but it will assist staff. You can only vote at the polling station stated on this card.

You can also find out which polling station you are able to vote at by visiting our online polling station finder.

Visit www.londonelects.org.uk

By post

If you are a registered postal voter, your three ballot papers will be sent to you about one week before polling day, and must be returned to your council by 10pm on 3rd May.

Voters who do not post their ballot papers and postal voting statement in time can deliver it by hand on polling day to any polling station in their borough or to their borough's elections office.

Voters should follow the instructions in the postal ballot pack carefully. Ballot papers and the postal voting statement should be folded and placed in the return envelopes as shown.

By proxy

If you have applied to have someone vote on your behalf (proxy), make sure that they know the candidates you wish to vote for.



WHAT TO EXPECT AT THE POLLING STATION

On 3rd May your local polling station is open between 7am and 10pm for you to cast your votes.

You should make sure that you arrive in plenty of time. By law, if you have not been issued with your ballot papers by 10pm, you will not be able to vote. This is the case even if you have been waiting in a queue since before 10pm.

When you arrive at the polling station you will be asked by staff for your name and address to make sure that you are on the register. Staff will then give you your three ballot papers and can help you understand how to fill these out if required.



Additional assistance

At the polling station, staff will be able to assist you in explaining how to vote. 'Tactile voting devices' and large-print versions of ballot papers are also available at all polling stations to help people with visual impairments. Polling stations will also have accessible booths which are lower and wider to accommodate wheelchairs.

Multi-lingual resources

All voting materials in polling stations are in English, however there will be guidance notes available on request in 16 languages: Arabic, Bengali, Chinese (simple and traditional), French, Gujarati, Hindi, Lithuanian, Polish, Portuguese, Punjabi, Somali, Spanish, Tamil, Urdu, and Yoruba. It is also available in Braille.

Outside the polling station

Supporters of the candidates (called 'tellers') may stand outside the polling station and ask for your name and address. Tellers help their parties to identify supporters who have not yet voted, so that they can be contacted and encouraged to vote, and offered assistance – such as transport to the polling station – if necessary. You do not have to speak to tellers if you do not wish to do so.

ELECTION DAY GUIDE

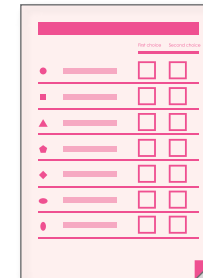
You can tear out this page and take it with you to your polling station on **3rd May 2012** so you know how to fill in your ballot papers correctly.

If you are unsure where your polling station is, visit www.londonelects.org.uk

Polling stations are open from **7am-10pm**. Make sure that you arrive in plenty of time to avoid missing out on having your say. If you arrive and there's a queue you might not be able to enter the polling station in time to vote.

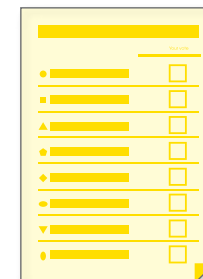
1 Vote for the Mayor using your PINK ballot paper.

- You can make two choices for Mayor.
- Vote for your first choice candidate by marking a cross (X) in the first choice column.
- Vote for your second choice candidate by marking a cross (X) in the second choice column.
- If you give the same candidate your first and second choice, only your first choice will be counted.
- Marking a second choice cannot reduce the chances of your first choice being successful.



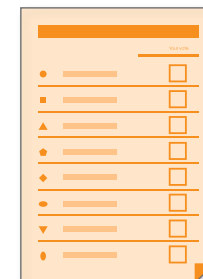
2 Vote for your Constituency London Assembly Member using your YELLOW ballot paper.

- This is the person who you want to represent your local area.
- Mark one cross (X) in the box next to the candidate you wish to vote for.



3 Vote for a London-wide Assembly Member using your ORANGE ballot paper.

- This is the party or independent candidate who you want to represent the whole of London.
- Mark one cross (X) in the box next to the party or candidate you wish to vote for.



If you are voting at a polling station

Put all three ballot papers in the same ballot box. Do not fold your ballot papers.

If you are voting by post

Your three ballot papers will arrive by post. Please mark your ballot papers, complete the declaration with your signature and date of birth, and return in the envelopes provided so that they arrive before 10pm on 3rd May.



This booklet is available in Braille,
large-print and audio versions.

Request your copy by
emailing info@londonelects.org.uk
or call us on 020 7983 4444.

This booklet is published by the Greater London Returning Officer
London Elects, City Hall, The Queen's Walk, London SE1 2AA

Printed by Howitt
Oddicroft Lane, Sutton Parkway, Sutton in Ashfield, Nottingham NG17 5FB



londonelects.org.uk