



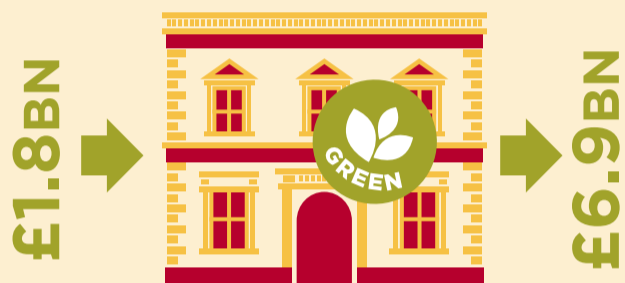
WHAT HAVE THE LIBERAL DEMOCRATS ACHIEVED IN GOVERNMENT?

ENVIRONMENT

03

GREEN INVESTMENT BANK

We have created the **WORLD'S FIRST NATIONAL GREEN INVESTMENT BANK**, which has backed over 44 green infrastructure projects already.



It's been given £1.8 billion of direct support, using this to mobilise investments totalling £6.9 billion and rising.

PENSIONS

06

RESTORING THE LINK BETWEEN PENSIONS & EARNINGS

The state pension is now once again **LINKED WITH EARNINGS** and, thanks to the Liberal Democrat triple lock, there will always be a decent rise each year.



We have delivered the biggest ever cash rise in the state pension and pensioners will receive, on average, **£15,000 MORE** over the course of their retirement.

OUR COMMUNITIES

09

PROTECTING POST OFFICES

LABOUR CLOSED 7,000+ POST OFFICES
WE'RE MODERNISING POST OFFICES



We're introducing new services such as free cash machines. The new plans introduce **EMPLOYEE SHARE OWNERSHIP** for the Royal Mail and **MUTUALISATION** for Post Offices.

SAME-SEX MARRIAGE

11

EXTENDING PERSONAL FREEDOMS

We've legislated to let **SAME-SEX COUPLES MARRY**, and given those religions who have asked for it the freedom to carry out such ceremonies.



FAIRER TAXES

01

INCOME TAX CUTS

OVER 3 MILLION
of the lowest earners are being **LIFTED OUT OF** PAYING INCOME TAX.

TAX BILL

TOTAL

£0

OVER 26 MILLION

are receiving a **£825 TAX CUT**.
For the average family, we are cutting their income tax bill by over a third.

£825



FAIRER TAXES

02

RICHEST PAY A FAIRER SHARE

We're **CUTTING TAX BREAKS FOR THE RICHEST**.

Someone earning **£1M A YEAR** HAD TO PAY **£381,000 MORE TAX** during this Parliament than they paid in the same period under Labour.



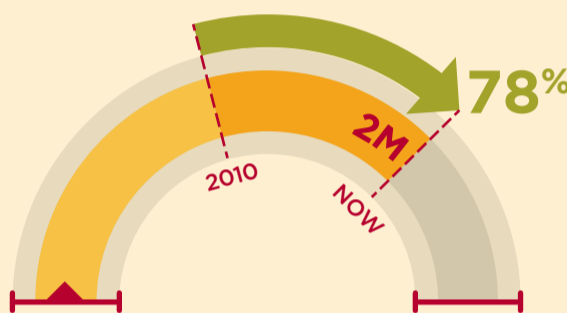
By cracking down on tax avoidance and evasion, an **EXTRA £9 BILLION IS NOW BEING RAISED EACH YEAR**.

JOBS & YOUNG PEOPLE

04

RECORD APPRENTICESHIPS

2 MILLION APPRENTICESHIPS have been started since 2010. Apprenticeship numbers are **UP 78%** comparing the same periods under this government with the last Labour government.



CHILDREN

05

EXTRA HELP FOR THE CHILDREN WHO NEED IT MOST

THE PUPIL PREMIUM

is giving schools **EXTRA MONEY TO HELP THE MOST DISADVANTAGED CHILDREN**. It now gives an extra **£1,320pa** per eligible primary school pupil and **£935pa** per eligible secondary school pupil.



BANKS

07

REFORMING THE BANKS

The recommendations of the Independent Commission on Banking to **SEPARATE HIGH STREET AND CASINO BANKING** are being implemented in full and without any delay to their plans.



CIVIL LIBERTIES & JUSTICE

08

RESTORING OUR CIVIL LIBERTIES

We have put an end to years of attack by Labour on our rights, and instead been improving them:

- AXING PLANS** to monitor everyone's internet and social media use
- SCRAPPED LABOUR'S** expensive & intrusive mandatory Identity Cards scheme
- STOPPED** the government permanently storing DNA of innocent people
- EXTENDING** the use of juries in complex cases
- STOPPED** the routine detention of children in immigration cases
- CUTTING** the maximum period of detention without trial to 14 days
- REFORMING LIBEL LAW** to protect people who criticise firms and academics who publish research



HOUSING

10

BUILDING MORE HOMES

190,000

NEW AFFORDABLE HOMES

under the Lib Dems, the first net increase in social housing supply for over 30 years. We've also brought **70,000 EMPTY HOMES BACK INTO USE**.



PARENTING

12

HELP TO BRING UP KIDS

We're introducing **SHARED PARENTAL LEAVE** and a guaranteed 15 hours of **FREE CHILDCARE FOR ALL 3 AND 4 YEAR OLDS**.



www.MarkPack.org.uk

This is not an official party publication. Responsibility for the selection of topics and the wording of them rests with Mark Pack. Particular thanks however to the Liberal Democrat Policy Unit for providing a significant part of the information used in researching this infographic.



Licensed under Creative Commons Attribution, Noncommercial, Share Alike. You are welcome to reuse this graphic under these terms as long as you credit it to www.markpack.org.uk/libdem-infographic and include a source hotlink.